



*more than involved*

COMPANY

INDUSTRIES

PRODUCTS

CERTIFICATION

## Company

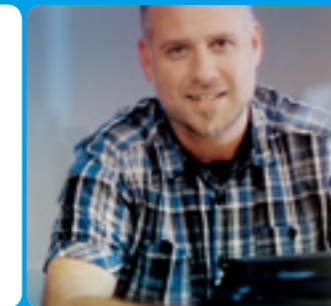
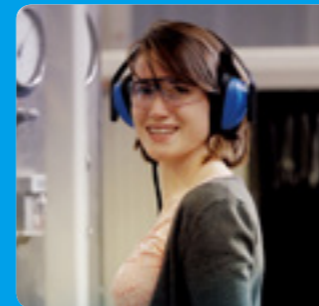
Belven® can boast over 40 years experience in the production of valves and accessories, which are used in heating, air conditioning, industrial pipelines and water treatment.

Our foundations are built on a traditional family business. Belven® is totally independent and combines reliability and friendliness to produce a business with the flexibility of a private company.

Our products meet the highest standards and quality has become second nature to us. This gives us the chance to focus our attention and our efforts on something equally important: our clients.

We listen to what you need and supply what you expect. Our mission is our goal. Involved and close, personal and solution-focused. We want to be your global preferred valve partner.

We are more than involved.






**belven**<sup>®</sup>

In 2008, after 28 years of experience in production of quarter turn valves for industrial use, BELGIUM VENTIEL NV becomes BELVEN NV.

### • Involved in products

Belven<sup>®</sup> controls the full chain, from design and manufacture through to the service we provide our customers. The  logo casted in the body material and the necessary quality control certificates guarantee an authentic Belven<sup>®</sup> product.

Our ball valves, butterfly valves, filters, check valves and gate valves are innovative. Our R&D team are continuously looking to further improve and add to our product range. Naturally our products meet the strictest European, German, American and Japanese industrial standards.

We just love a perfect valve.

### • Involved in services, world wide

Belven<sup>®</sup> want to provide the customer with the best sustainable solution. By engaging in a constant dialogue and technological advances, we manufacture valves that fully meet the demands of the market.

From our head office in Mechelen (Belgium) and our branches in Russia, Asia Pacific and other emerging markets. We work together with agents, distributors throughout Europe, Asia and the rest of the world.

Our customers can reach us 24/7. Our stock is decentralized, we offer a fast delivery. At the heart of the action we offer excellent service. It is that pride that goes beyond just delivering a top quality product. At Belven<sup>®</sup> we strongly believe in these important family values: respect, loyalty, trust, stability, positivity and a proactive attitude. All values that support our commitment and effort to make our customers smile with satisfaction.

### • Involved in markets

Belven<sup>®</sup> supplies product to businesses in various industries and sectors: District Energy, Water Treatment, Tank Storage(Oil, Gas, Chemical), and Process Industry, HVAC (Heating, Ventilation and Air-Conditioning).

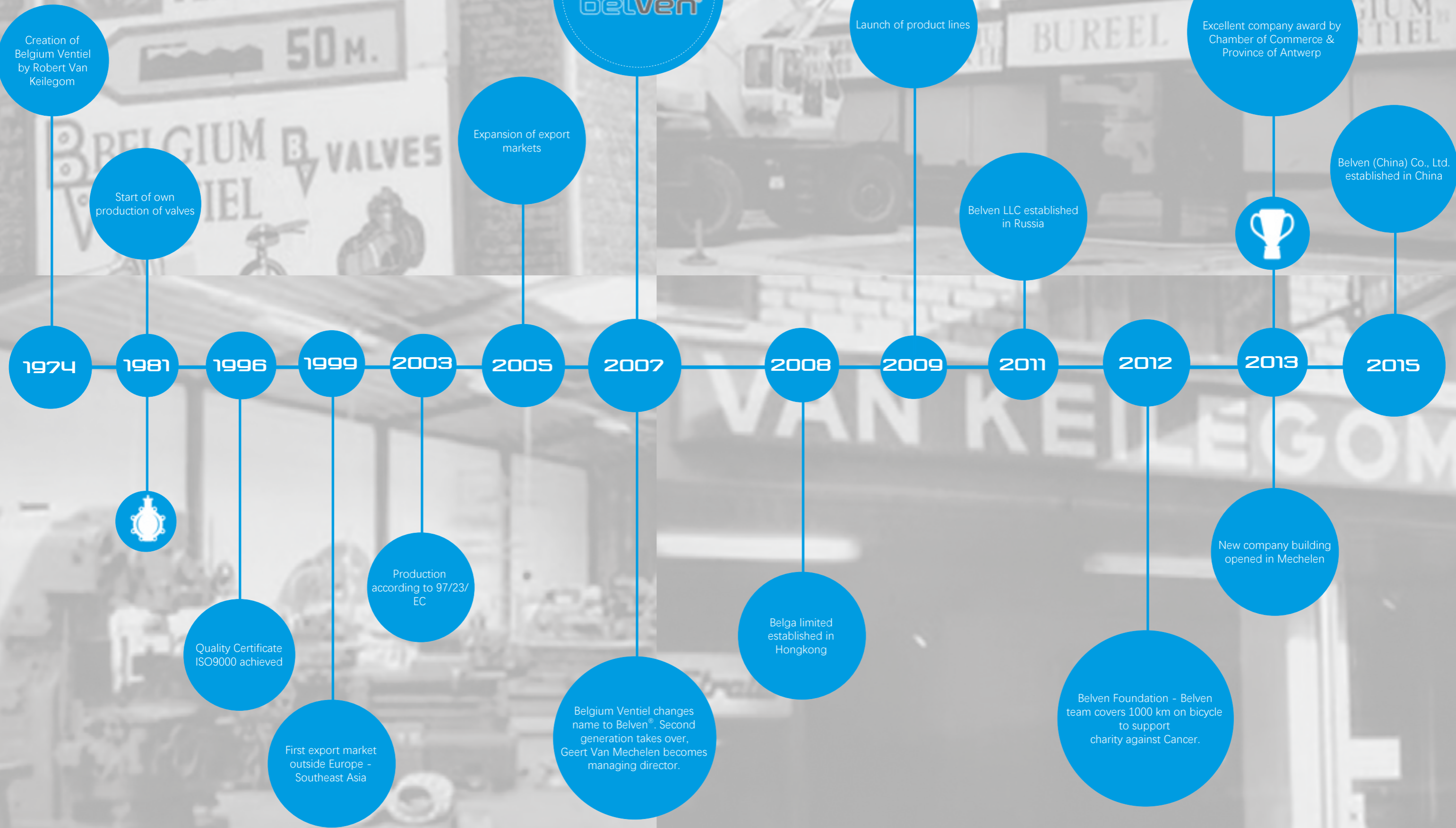
Our customers are installation companies, petrochemical and chemical companies, storage companies, manufacturers as well as companies that build machinery.

### • Involved in people

Belven<sup>®</sup>'s success strongly depends on the know-how, experience and passion of our employees. Belven<sup>®</sup> years for involved and inspired employees. With the willingness to provide our customers the satisfaction they are entitled to. This is why we invest in the continuous training and development of our employees.

### • Involved in corporate responsibility

The open mind of Belven<sup>®</sup> to conquer foreign markets also ensured involvement and commitment to corporate responsible business. As a family business we are conscious of social involvement. We give young people opportunities in the labor market, we provide schools with materials and since 2012 we started the Belven Foundation, to support charitable and social projects.



Creation of Belgium Ventiel by Robert Van Keilegom

Start of own production of valves

Quality Certificate ISO9000 achieved

First export market outside Europe - Southeast Asia

Production according to 97/23/EC

Expansion of export markets

Belgium Ventiel changes name to Belven®. Second generation takes over, Geert Van Mechelen becomes managing director.

Belga limited established in Hongkong

Launch of product lines

Belven LLC established in Russia

Belven Foundation - Belven team covers 1000 km on bicycle to support charity against Cancer.

New company building opened in Mechelen

Excellent company award by Chamber of Commerce & Province of Antwerp

Belven (China) Co., Ltd. established in China





TANK STORAGE



TRUCK&(SEMI)TRAILERS  
INDUSTRY



(PETRO-)CHEMICAL INDUSTRY

VOPAK TERMINALS - LEFT BANK BEVEREN

VOPAK TERMINALS - EUROTANK - RIGHT BANK - ANTWERP

EUROTANK - MAASVLAKTE ROTTERDAM

ADPO NV - KALLO

OILTANKING STOLTHAVEN - ANTWERP

STOLTHAVEN

ORGANIK KIMYA - ROTTERDAM

VOPAK- BOTLEK - ROTTERDAM

SEA-TANK TERMINAL - GHENT

SEA-TANK TERMINAL - ROUEN

SEA-TANK TERMINAL - BORDEAUX

VITOL EUROPOORT - ROTTERDAM

SHELL COMPANY

ADPO GHENT NV - GHENT

NOORDNATIE TERMINALS - ANTWERP

LBC TANK TERMINAL - ANTWERP

LBC-ERTISA( BAYERSITE) - ANTWERP

EOC SURFACTANTS - OUDENAARDE

LANXESS - ANTWERP

AVIA BELGOMAZOUT - LIEGE

ALCA PETROLEUM - ANTWERP

ORGANIK KIMYA - DELTA VANA - ISTANBUL

KUWAIT PETROLEUM - ANTWERP

ARTECO - ELF/TOTAL-LUBRICANTS - SCHOTEN

TOTAL - GRIMBERGEN

BRC-PETROPLUS - ANTWERP

OILTANKING - TERNEUZEN

ITC-RUBIS - ANTWERP

STOLT - SINGAPORE



DESALINATION

FUJAIRAH POWER & DESALINATION PLANT - UNITED ARAB EMIRATES  
JEBEL ALI DESALINATION STATION 'K' - UNITED ARAB EMIRATES  
KALBA DESALINATION PLANT SEAWATER INTAKE & BRINE OUTFALL PIPELINES - SHARJAH  
UNITED ARAB EMIRATES  
LAYYAH POWER STATION & DESALINATION PLANT - UNITED ARAB EMIRATES  
RAS ABU FONTAS "B" AND DESALINATION STATION OFFSHORE WORKS - QATAR  
UMM AI NAR DESALINATION PLANT - UNITED ARAB EMIRATES

HAMMA DESALINATION PLANT - ALGERIA

BARKA POWER & DESALINATION PROJECT - OMAN

LVYUAN MUNICIPAL PROJECT SEWAGE TREATMENT PLANT - CHINA

QINGDAO DONGJIAKOU DESALINATION PROJECT - CHINA

XINXIANG TIEXIBEIBU SEWAGE TREATMENT PROJECT - CHINA

JINGHAI COUNTRYSIDE DRINKING WATER QUALITY IMPROVEMENT PROJECT - CHINA

SEWAGE TREATMENT PLANT STEKENE

SEWAGE TREATMENT PLANT LEDEGEM

PUMPING STATION HAVANNA STRAAT MERKSEM

WATER TREATMENT PLANT ROMANIA

VALMAS VLETEREN

BIOWANZE

MALTEUROP FRANCE VITRY

WATER TREATMENT PLANT SCLESSIN



WATER TREATMENT



CONSTRUCTION & MACHINERY

PUMPING STATION LONDEN STRAAT GHENT  
PUMPING STATION BREE STRAETEN MERCHTEM  
PUMPING STATION BRUGGESTRAAT MECHELEN  
PUMPING STATION HANSWIJK DE BRECHT MECHELEN  
PUMPING STATION RIJMENAMSE STEENWEG MECHELEN  
PUMPING STATION D.AESTEN STRAAT BEERSE  
PUMPING STATION MEIR ANTWERP  
PUMPING STATION SCHOOL STRAAT ZEVEKOTE  
PUMPING STATION BRUSSELSE STEENWEG MELLE  
PUMPING STATION SCHOONAARDSEBAAN SCHOONAARDE  
PUMPING STATION RICKSTEENWEG ZWEVEZELE  
SEWAGE TREATMENT PLANT BRASSCHAAT  
PUMPING STATION VELM-SCHERMERSHOEK-KLOOSTERBEEK  
PUMPING STATION DRIESTENBROEK STRAAT NEDERBRAKEL  
PUMPING STATION BISSCHOPHOEKLAAN KOEKELARE  
PUMPING STATION RUGGESTRAAT AVELGEM  
PUMPING STATION NIEUWE DIJK LOMMEL  
PUMPING STATION KAAI STRAAT STEKENE  
PUMPING STATION + AERATION BASIN LEUVENSE STEENWEG  
SMALL WATER TREATMENT STATION WESTOUTER  
PUMPING STATION DILBEEK  
SMALL WATER TREATMENT STATION LO-RENIGE  
COOLING WATER SYSTEM CITRIQUE TIENEN  
SMALL WATER TREATMENT STATION MOORSLEDE  
SMALL WATER TREATMENT STATION ESSEN  
SMALL WATER TREATMENT STATION ADINKERKE  
RAPID RAW WATER TREATMENT PLANT - MALAYSIA



HVAC



AUTOMOTIVE INDUSTRY



METALURGICAL INDUSTRY

## Industries References



DISTRICT COOLING



DISTRICT HEATING



FIRE PROTECTION SYSTEMS



SHIP BUILDING SYSTEM

NCCI	EMIRATES UNIVERSITY
AL FAISALIAH CENTRE	ZAYED MILITARY CITY - T-08
COURT COMPLEX - RIYADH	DUBAI METRO - DM-03
SABIC - RIYADH	DUBAI METRO - DM-05
GRANADA CENTER - RIYADH	AL RAHA BEACH - RB-02
AL ANOUD - RIYADH	AL RAHA BEACH - RB-04
MINISTRY OF FINANCE	AL KHEELY MALL
SHEIKH ZAYED ROAD-2 - DUBAI	ZAYED MILITARY CITY - T-07
KHALIFA 2 - ALDAR 10 - ABU-DHABI	AL RIGGA - DM-02
MOHAMED BIN ZAYED CITY - AD-12 - ABU-DHABI	AL BARSHA
SPINNEYS - ABU-DHABI	RASHIDIYA
AJMAN 2 - AJ-02	JEBEL ALI JUMEIRA - DM-06
ALDAR 10 - AD-07 - ABU-DHABI	AL KIFAF - DM-04
CENTRAL MARKET - AD-08 - ABU-DHABI	JABEL ALI INDUSTRIAL ZONE - DM-01
DIP 3 & DIP 6 - ABU-DHABI	AIRPORT ROAD
SHEIK ZAYED ROAD - DB-05	YAS-ISLAND - YI-01 / YI-02
RAS AL KHAIMIH EXP. - RK-01	MUSAHHAH RESIDENTIAL CITY
	DUBAI METRO DB-05-SZR2
	AL KIFAF - DM04-T-C-01-07



FOOD INDUSTRY



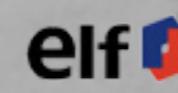
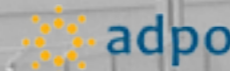
POWER PLANT



OIL&GAS

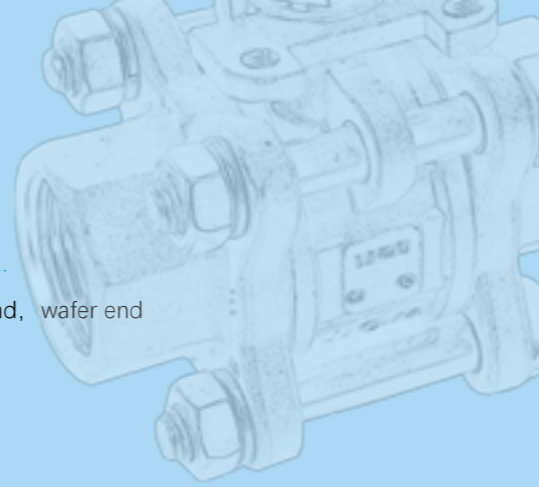
LAYS - USA  
 PRINGLES- USA  
 HENGYUAN POWER PLANT - CHINA  
 HEQI POWER PLANT - CHINA  
 HUANENG POWER PLANT - CHINA  
 KEMAMAN BITUMEN COMPANY SDN BHD - MALAYSIA  
 PETRONAS METHANOL LABUAN - MALAYSIA  
 SHELL SABAH - MALAYSIA  
 NGL TECH SDN BHD - TANJUNG BARAM WHP DEVELOPMENT PROJECT FOR ENQUEST/  
 UZMA - MALAYSIA  
 KLK OLEOMAS SDN BHD - MALAYSIA  
 PALMAJU EDIBLE OIL SDN BHD - MALAYSIA  
 PALM OLEO KLANG SDN BHD - MALAYSIA  
 LOL LODERS CROLAAN SDN BHD - MALAYSIA  
 KECK SENG EDIBLE OIL SDN BHD - MALAYSIA  
 LOL EDIBLE OIL SDN BHD, SANDAKAN - MALAYSIA  
 PLATINUM NANO CHEM SDN BHD(BIODIESEL) - MALAYSIA  
 SOUTHERN STEEL SDN BHD - MALAYSIA  
 LOL OLEOCHEMICAL - MALAYSIA  
 MUDA PAPER MILL - MALAYSIA  
 ENCO SYSTEM - MALAYSIA  
 PETROFAC - RAPID PROJECT - MALAYSIA  
 WATER ENGINEERING TECHNOLOGY SDN BHD - RAPID RAW WATER TREATMENT  
 PLANT - MALAYSIA  
 TOYO ENGINEERING - GARRAF FULL FIELD DEVELOPMENT - MALAYSIA  
 INTRO OIL SERVICES SDN BHD - MALAYSIA  
 KEMAMAN BITUMEN COMPANY SDN BHD - MALAYSIA  
 PETRONAS METHANOL LABUAN - MALAYSIA  
 ION EXCHANGE SYSTEM - THAILAND  
 STEAM HEADER CONTROL VALVE - THAILAND  
 SEONG SAN BIO ENERGY - THAILAND  
 ENVIRONMENT PULP AND PAPER LTD. - THAILAND

### Global partners



## Ball valve Advantages

- Available in various end connections: threaded end BSP/NPT, welded end BW/SW, flange end, wafer end
- Available in various internal structure: floating ball, trunnion ball
- Available in various body: one-piece, two-piece, three-piece
- Available in various body material: WCB/CF8/CF8M/4A/5A etc.
- Available in various seat material: PTFE/RPTFE/CPTFE/METAL etc.
- Other requirements please consult with Belven.



**BV1**  
One-piece ball valve



**BV2**  
Two-piece ball valve



**BV3M**  
(With top flange)  
Three-piece ball valve



**BV3WM**  
(Available with fire safe)  
Three-piece ball valve

Product name	BV code	End con	Pressure	Size	
				inch	mm
One-piece ball valve	BV1	BSP,NPT	1000WOG	1/4"-2"	DN8-50
Two-piece ball valve	BV2	BSP,NPT	1000WOG	1/4"-2"	DN8-50
Three-piece ball valve	BV3	BSP,NPT,BW,SW	1000WOG	1/4"-4"	DN8-100
Three-piece ball valve	BV3M (3M3)	BSP,NPT,BW,SW	1000WOG	1/4"-6"	DN8-150
Three-piece ball valve(available with fire safe)	BV3WM	BSP,NPT,BW,SW	1500WOG/2000WOG	1/4"-2 1/2"	DN8-65
Split-body ball valve flanged end	BV4	RF	PN16-PN40/A150-A300	1/2"-12"	DN15-300
Split-body ball valve flanged end	BV4S	RF	PN16-PN40/A150	1"-4"	DN25-100
Split-body ball valve flanged end	BV4B	RF,RTJ	PN16-PN100/A150-A1500	1/2"-60"	DN15-1500
Three-piece ball valve flanged end	BV3F	RF,RTJ	PN16-PN100/A150-A1500	1/2"-60"	DN15-1500
Ball valves for special application(full welded ball valve)	BV5	BW	PN25-PN40	1/2"-56"	DN15-1400
Multi-way ball valve	BV6	NPT,BSP,RF	PN16-PN40/A150-A300	1/2"-4"	DN15-100
Compact ball valve	BV8	WAFER	PN16	1/2"-4"	DN15-100

\* Other requirements please consult with Belven.



**BV6**  
Multi-way ball valve



**BV4**  
Split-body ball valve flanged end



**BV8**  
Compact ball valve



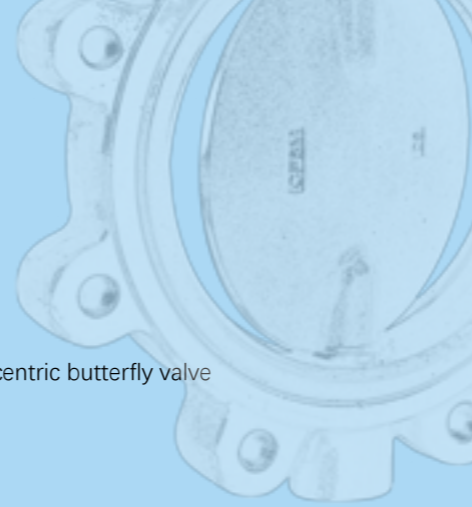
**BV5**  
Full welded ball valve



# Butterfly valve

## Advantages

- Available in various end connections: wafer, lug, welded end, flange end
- Available in various structure: concentric butterfly valve, double-eccentric butterfly valve, triple-eccentric butterfly valve
- Available in various body material: GG25/GGG40/WCB/CF8/CF8M/4A/5A etc.
- Available in various seat material: EPDM/NBR/VQM/EPDM HT/PTFE/RPTFE/CPTFE/METAL etc.
- Other requirements please consult with Belven.



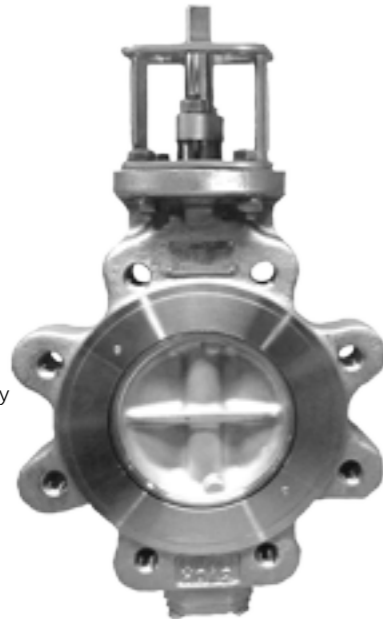
### BV10-HP

Wafer High Performance butterfly valve double eccentric



### BV10-TR

Wafer butterfly valve triple eccentric



### BV12-HP

Lug type high performance butterfly valve double offset



### BV13-TR

Flanged butterfly valve triple eccentric



### BV13-HP

Flanged high performance butterfly valve double eccentric



### BV15TRB

Full welded butterfly valve

Product name	BV code	End con	Pressure	Size	
				inch	mm
Wafer type butterfly valve	BV10	WAFER	PN6-PN25/A125-A150	1"-40"	DN25-1000
U-type butterfly valve	BV10-U	U type	PN10-PN25/A125-A150	4"-48"	DN100-1200
Wafer High Performance butterfly valve double eccentric	BV10-HP	WAFER	PN16-PN25/A150-A300	2"-24"	DN50-600
Wafer butterfly valve triple eccentric (low application)	BV10-TRI	WAFER	PN16-PN40/A150-A300	2"-48"	DN50-1200
Wafer butterfly valve triple eccentric	BV10-TR(B)	WAFER	PN16-PN100/A150-A600	3"-48"	DN80-1200
Wafer type butterfly valve soft seated	BV10-NP	WAFER	PN10-PN16/A150	2"-12"	DN50-300
Wafer type butterfly valve with liner	BV10-PTFE/TFM	WAFER	PN10-PN16/A150	2"-40"	DN50-1000
U-type butterfly valve with counter nut	BV11	U type	PN10-PN25/A125-A150	4"-48"	DN100-1200
Lug Type Butterfly Valve	BV12	LUG	PN6-PN25/A125-A150	1 1/2"-28"	DN40-700
U-type butterfly with tapered holes	BV12-U	U type	PN10-PN25/A125-A150	4"-48"	DN100-1200
Lug type high performance butterfly valve double offset	BV12-HP	LUG	PN16-PN25/A150-A300	2"-24"	DN50-600
Lug butterfly valve triple eccentric (low application)	BV12-TRI	LUG	PN16-PN40/A150-A300	2"-48"	DN50-1200
Lug butterfly valve triple eccentric	BV12-TR(B)	LUG	PN16-PN100/A150-A600	3"-48"	DN80-1200
Lug type butterfly valve soft seated	BV12-NP	LUG	PN10-PN16/A150	2"-12"	DN50-300
Lug type butterfly valve with TFM liner	BV12-PTFE/TFM	LUG	PN10-PN16/A150	2"-40"	DN50-1000
Flanged eccentric butterfly valve	BV13	RF	PN10-PN25/A125-A150	4"-80"	DN100-2000
Flanged high performance butterfly valve double eccentric	BV13-HP	RF	PN16-PN25/A150-A300	2"-24"	DN50-600
Flanged butterfly valve triple eccentric (low application)	BV13-TRI	RF	PN16-PN40/A150-A300	3"-48"	DN80-1200
Flanged butterfly valve triple eccentric	BV13-TR(B)	RF	PN16-PN100/A150-A600	3"-48"	DN80-1200
Double flanged butterfly valve with concentric disc	BV14	RF	PN10-PN25/A125-A150	2"-104"	DN50-2600
Triple eccentric butt welded butterfly valve	BV15-TR	WELD	PN16-PN100/A150-A600	8"-48"	DN200-1200
Full welded butterfly valve	BV15TRB	WELD	PN16-PN100/A150-A600	8"-48"	DN200-1200

\* Other requirements please consult with Belven.



### BV10

Wafer type butterfly valve



### BV12

Lug Type Butterfly Valve



### BV13

Flanged eccentric butterfly valve



### BV10-U

U-type butterfly valve



### BV12-TFM

TFM lined butterfly valve



### BV14

Double flanged butterfly valve with concentric disc

## Check valve Advantages

- Available in various end connections: threaded end BSP/NPT, welded end BW/SW, flange end
- Available in various structure: swing, piston, duo-swing and ball check valve, silent check valve
- Available in various body material: GG25/WCB/CF8/CF8M/4A/5A etc.
- Available in various seat material: EPDM/NBR/FKM/VQM/PTFE/METAL etc.
- Other requirements please consult with Belven.



Product name	BV code	End con	Pressure	Size	
				inch	mm
Piston check valve threaded and welded end	BV35	BSP,NPT,BW,SW	PN10-PN100/A150-A1500	1/2"-2"	DN15-50
Wafer type disc check valve	BV36	WAFER	PN10-PN100/A150-A600	1/2"-8"	DN15-200
Piston check valve flanged	BV37	RF,RTJ	PN10-PN100/A150-A1500	1/2"-2"	DN15-50
Wafer type swing check valve	BV38	WAFER	PN10-PN16	2"-12"	DN50-300
Wafer type swing-check valves springloaded	BV39	WAFER	PN10-PN16	1 1/2"-12"	DN40-300
Duo-check valve	BV40	WAFER	PN10-PN100/A150-A1500	2"-32"	DN50-800
Ball check valve	BV41	RF	PN10-PN16	1 1/2"-12"	DN40-300
Flanged swing check valve	BV42	RF,RTJ	PN10-PN100/A150-A1500	2"-48"	DN50-1200
Check valve for special applications( silent check valve)	BV45	WAFER,RF	PN6-PN100/A125-600	1 1/2"-56"	DN40-1400

\* Other requirements please consult with Belven.

### BV35

Piston check valve threaded and welded end



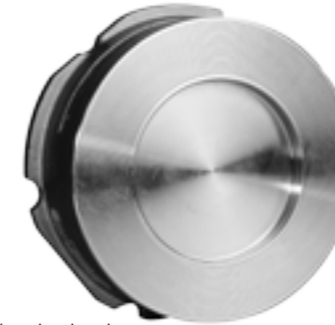
### BV41

Ball check valve



### BV36

Wafer type disc check valve



### BV38

Wafer type swing check valve



### BV42

Flanged swing check valve



### BV45

Silent check valve



### BV40

Duo-check valve



### BV39

Wafer type swing-check valve springloaded



## Globe valve Advantages

- Available in various end connections: welded end BW/SW, threaded end BSP/NPT, flange end
- Available in various body material: GG25/WCB/CF8/CF8M/4A/5A etc.
- Available in various seat material: Copper alloy, Stellite etc.
- Other requirements please consult with Belven.

## (Knife)Gate valve Advantages

- Available in various end connections: welded end BW/SW, threaded end BSP/NPT, flange end, wafer and lug type(knife gate valve)
- Available in various structure: rising stem, non-rising stem
- Available in various body material: GG25/WCB/CF8/CF8M/4A/5A etc.
- Available in various seat material: Copper alloy, Stellite etc.
- Other requirements please consult with Belven.



**BV27**  
Welded globe valve

**BV27**  
(Forged)  
Welded globe valve



**BV28**  
Flanged globe valve straight



**BV49**  
Flanged gate valve



**BV50**  
Knife gate valve

Product name	BV code	End con	Pressure	Size	
				inch	mm
Threaded globe valve	BV26	BSP,NPT	PN10-PN100/A150-A1500	1/2"-2"	DN15-50
Welded globe valve	BV27	BW,SW	PN10-PN100/A150-A1500	1/2"-18"	DN15-450
Flanged globe valve straight	BV28	RF,RTJ	PN10-PN100/A150-A1500	1/2"-18"	DN15-450

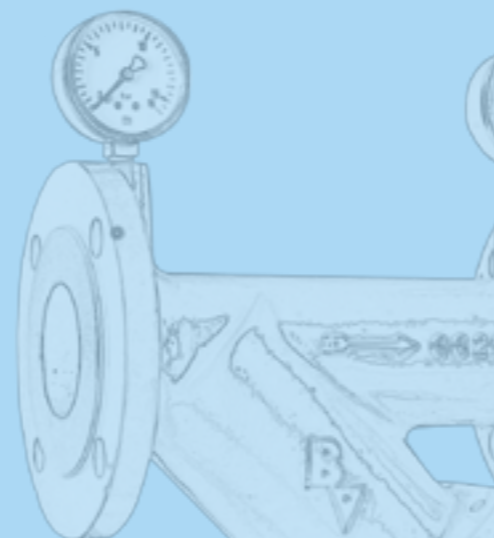
\* Other requirements please consult with Belven.

Product name	BV code	End con	Pressure	Size	
				inch	mm
Threaded gate valve	BV46	NPT,BSP	PN10-PN100/A150-A1500	1/2"-2"	DN15-50
Gate valve with welded ends	BV47	BW,SW	PN10-PN100/A150-A1500	1/2"-48"	DN15-1200
Flanged gate valve	BV49	RF,RTJ	PN10-PN100/A150-A1500	1/2"-48"	DN15-1200
Knife gate valve	BV50	WAFER,SEMI-LUG	PN10/150PSI	2"-48"	DN50-1200

\* Other requirements please consult with Belven.

## Strainer Advantages

- Available in various end connections: welded end BW/SW, threaded end BSP/NPT, flange end
- Available in various body material: GG25/GGG40/WCB/CF8/CF8M/4A/5A etc.
- Available in various filter net material: SS304/SS316 etc.
- Other requirements please consult with Belven.



## Other valves



Product name	BV code	End con	Pressure	Size	
				inch	mm
Threaded Y-strainer	BV55	BSP,NPT	PN10-PN100/A150-A600	1/2"-2"	DN15-50
Flanged Y-strainer	BV56	RF	PN10-PN100/A150-A600	1/2"-24"	DN15-600

\* Other requirements please consult with Belven.

Product name	BV code	End con	Pressure	Size	
				inch	mm
Three-piece cryogenic ball valve	BV3WM-C	NPT,BSP,SW,BW	A150-A600	1/2"-4"	DN15-100
Two-piece organic flanged ball valve	BV4B-C	FF	PN16-PN40/A150-A300	1/2"-8"	DN15-200
Welded triple eccentric butterfly valve with top entry cover	BV15TR-CM	BW	PN16-PN100/A150-A600	4"-48"	DN200-1200
Flexible joint	BV18	RF	PN10-25/A150-A300	1 1/4"-64"	DN32-1600
Dismantling joint	BV51	RF	PN10-16/A150	2"-80"	DN50-2000
Dynamic differential pressure control valve	BV74	BSP/NPT,RF	PN16-PN25/A125-A150	1/2"-10"	DN15-250
Fixed orifice double regulating valve	BV75	BSP/NPT,RF	PN16-PN25/A125-A150	1/2"-24"	DN15-600
Pressure reducing valve	BV78	RF	PN10-40/A125-A300	1 1/2"-48"	DN40-1200
Diaphragm valve	BV97	RF	PN10-PN16/A125-A150	1"-8"	DN25-200

\* Other requirements please consult with Belven.

## Operating options

### MANUAL

- LEVER in different materials (long – short model), adjustable, butterfly or oval lever for small sizes, T-lever(standard for big sizes), fail safe lever, ...
- GEARBOX in different materials such as cast iron or aluminium, standard/lockable/with chainwheel, with visual open/close indication

### PNEUMATIC

- Double acting pneumatic actuator - DA
- Single acting pneumatic actuator - SA
- Suitable for high duty cycles
- Fast opening and closing times
- Few moving parts: increases operational safety
- Namur design for easy mounting of accessories, as limit switches, (NAMUR)solenoid valves and bus communication systems
- Can be combined with emergency operation (manual override - MOD)
- SA : Fail-safe function can easily be realized in spring closing or spring opening configuration, standard Belven chooses for operational safety – fail close position

### ELECTRIC

- Wide range of voltage options
- Self-locking reduction gear
- The electronic circuit adjusts automatically the motor speed depending on the mechanical charge variations in order to drive the cycle always in the same time
- All actuators are provided with torque switch
- Thermal protection
- Usual required options, like extra limit switches, visual open/close indication, heater and even an emergency handwheel operator are (often) standard integrated in the actuator
- Open / close and modulating duty
- Different protection classes

### ELECTRIC HYDRAULIC

- High operational safety
- Modular design for easy mounting of accessories, like limit switches or visual open/close indication
- Suitable for submerged purposes (IP68) as option
- Different oil pressures possible

Belven® aims to find solutions suitable for the automation of ball valves for the industrial and construction sector.

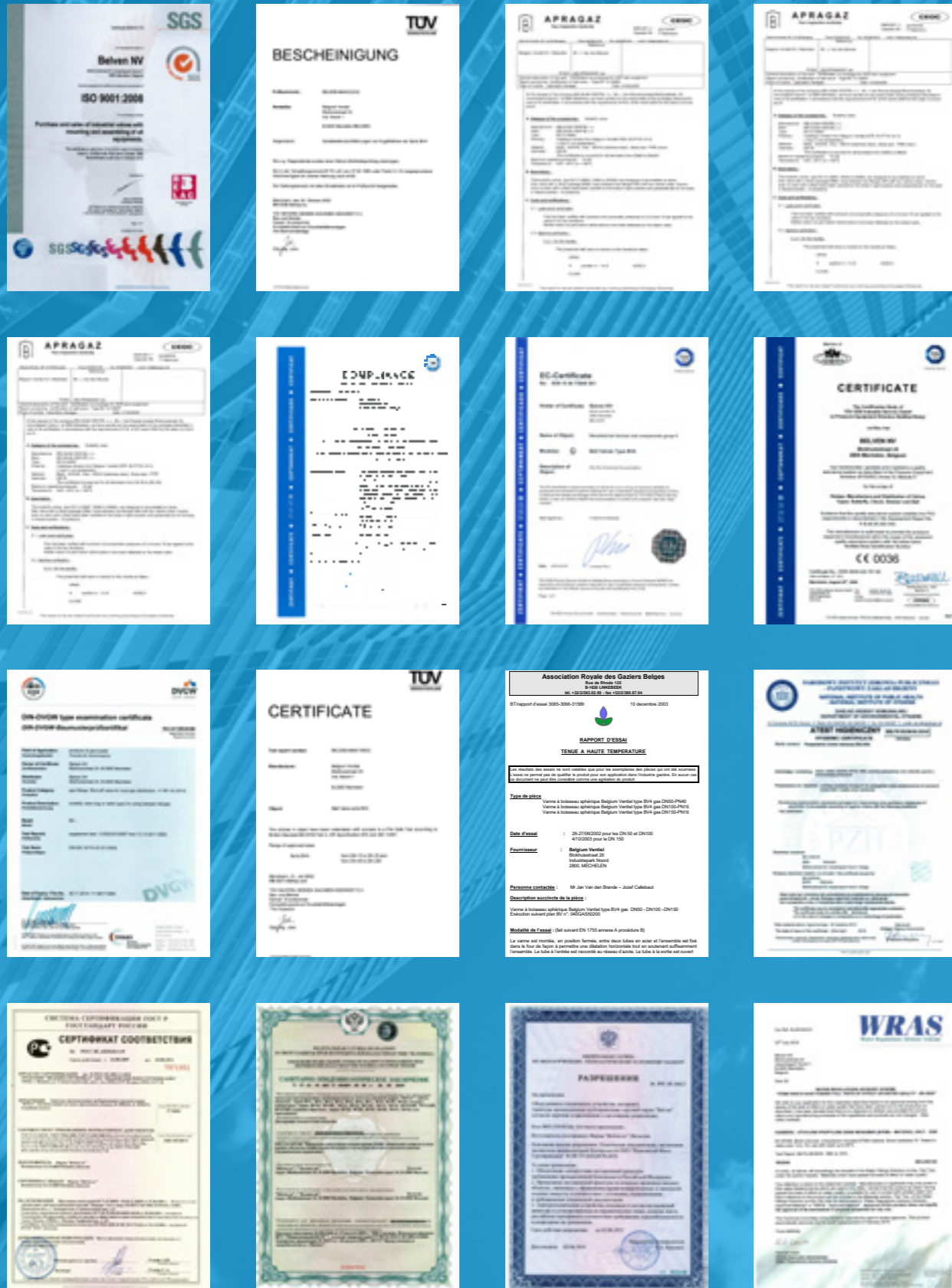
The usage of electronic components of last generation, together with precise mechanic, fruit of careful research and development, enables high performance and long-term reliability of the product.



ACCESSORIES

- Stem extension in steel or stainless steel
- Visual indicators
- Solenoid valves, steered by different voltages /currents and available in different ATEX protection classes
- Limit switches (mechanical, inductive, capacitive, ...)

# Certification



# Our branch



ADR | WRAS | DIN-DVGW | ATEX | KVBG | TA-LUFT | FIRE SAFE | ISO | PED | GOST | ROSTECHNADZOR | HYGIENIC



**Belven® -- The preferred global valve partner**

**more than inv~~olved~~alved**

The reason why we like our clients and agents so much, is, again, the love for our products. Their opinion matters a lot to us. Maybe even more than they realise. After all, they are the ones who give meaning to these products. We give birth to the valve. they give it a life. So we listen carefully to what they have to say and we are grateful for what we can learn from them.



válvula  
Kleppen Кран шаровой  
De la soupape 閥門 バルブ Ventil  
레바 (버) VALVE

belven®

 **MV RESOURCES (FE) PTE LTD**

31 Benoi Road (Pioneer Lot), Singapore 627778  
Tel: +65 67763233 Fax: +65 67753233  
Website: [www.mvfareast.com.sg](http://www.mvfareast.com.sg)  
Sales Manager: Mr Sean Lim  
Mobile: +65 91198320  
Email: [sean@mvfareast.com.sg](mailto:sean@mvfareast.com.sg)

  
Certificate No. SG0490069



