

OFFICE

Add: Room 612, Building 8#, Longfor times paradise
walk, Suzhou new district 215011, China
Tel: +86 512 65168207
Fax: +86 512 66167742
E-mail: Sales@enertechmsz.com
Website: www.enertechmsz.com

FACTORY

Add: 18# Shiyang Road, Suzhou New District, China
Tel: +86 512 65168207
Fax: +86 512 66167742

ENERTECH

Enertech provides 18 months from the date of shipment or 12 months after installation, whichever occurs first as our product warranty. Additionally, we provide engineering consultancy and technical support against all our products for lifetime. Enertech is glad to create more value to our customer from our years of research and development, coating technologies and manufacturing workmanship.

PRODUCT WARRANTY

ENERTECH

Enertech Machinery (Suzhou) Co., Ltd.

Designed for Severe Service

Enertech Special Valve
For Severe Service



HEADQUARTERS

● Suzhou China

SERVICE/SALES POINTS

● Singapore
● UAE
● Australia
● Malaysia
● Vietnam

SUPPLIED COUNTRIES

● Australia ● Malaysia
● China ● Vietnam
● Germany ● UAE
● Japan ● US
● Korea ● Singapore
● South Africa

Enertech is one professional special alloy material valve and tailor made valve supplier.
valve and tailor made valve supplier.

About ENERTECH

Enertech is one professional special alloy material valve and tailor made valve supplier. The strict raw material incoming control, experienced engineering team, high-precision machining with suitable workmanship and professional assembly / testing process guarantee our valve can work under the toughest condition.



PRODUCTION PROCESS

Contractor Review	Engineering	Raw Material Purchasing	Incoming inspection	Machining	Assembly	Pressure Test	Complete Product	Painting	Packing
01	02	03	04	05	06	07	08	09	10

INSPECT

Inspection is a very important part to control the valve quality. Enetech has different kinds of inspection equipment to cover most of special test requirement.

Testing	Dimension Checking	Met allographic Examination	Fire Safe Test	Fischer Scope Ferrite Content Test	High Temperature Test
Mechanical Property Test	NDE	Painting CPT and Adhesion	PMI Test	CV Test	Specimen Storage

APPLICATION



FPSO & SHIPBUILDING

Applications

The valve is designed with bronze, duplex, hastelloy, Titanium and other special material to resist the corrosion caused by exposure with salt water, high salinity/sea water environments.

Service Conditions

Sea water, offshore, Coastal marine environments.



MINING INDUSTRY

Applications

The key points of valves in the mining industry is abrasion resistance and often corrosion resistance as well in many cases, providing valves that provide long term service in harsh hostile applications, durability and easy maintenance. Enertech specializes in sizing valves based on your process conditions known, for providing the correct valve for the service condition.

Service Conditions

Slurry, processes with entrained particles/solids, High-Sulfur mediums, mixed sulphides, digestion, precipitation, corrosive, Heavy Duty process applications.



CHEMICAL INDUSTRY

Applications

Enertech is willing to provide the most suitable and cost effective valve solutions to our valuable customers to handle the high temperature and corrosive medium service applications and environments.

Service Conditions

Sulfuric Acid, Ammonia, Hydrogen, Hydrofluoric Acid, Chlorine, Ethylene-Oxide, Caustic Soda, Sodium Hydroxide, Acetic Acid, PTA

Solidifying nature of medium, high corrosive medium.



OIL & GAS INDUSTRY

Applications

We provide various kinds of valves for oil & gas industry, that fully comply to API certifications for all hydrocarbon processes.

Service Conditions

Oil Refineries, Gas Transmission Lines, Coal seam Gas, Wellhead Valves for onshore/offshore, High-Sulfur mediums, High Pressure, High Temperature, Corrosive Mediums.



CRYOGENIC

Applications

The cryogenic valve requires high precision machining, special material treatment, surface hardening technology.

Service Conditions

LNG, Air Separation.



OXYGEN

Applications

We minimize the sharp edges of the oxygen valve. The special cleaning and packing is provided in accordance with ASTM G93. Various materials, Monel 400, 316SS and others available pending applications.

Service Conditions

Oxygen Gas, Oxygen Liquid



VOLATILE ORGANIC COMPOUNDS

Applications

We produce the low emission valve for the VOC service. The valve has low emission packing or bellows design.

Service Conditions

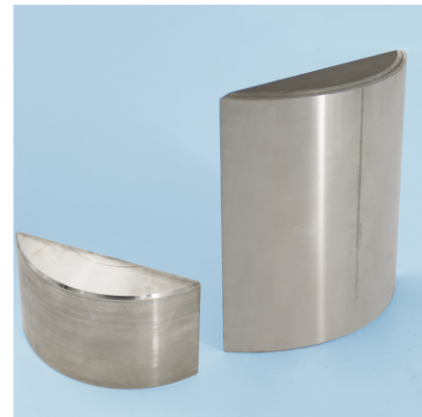
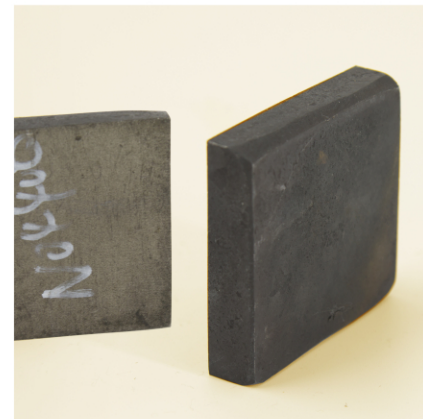
Volatile Organic Compounds

ENERTECH Special Valve
For Severe Service

SPECIAL MATERIAL VALVE

We manufacture valve in special materials such as Titanium, Nickel alloys, Hastelloy, Incoloy, Monel, Alloy20, super duplex and other corrosion resistant alloys. Our product type includes Ball, Globe, Gate, Check, DBB, HP Butterfly, etc. We have a variety of forged valve material in stock. Having valve body forgings allows us to provide timely deliveries at short notice of complete valves in a variety of pressure classes and material grades that end users come to rely on in most instances, for these urgent valves, please feel free to contact us.

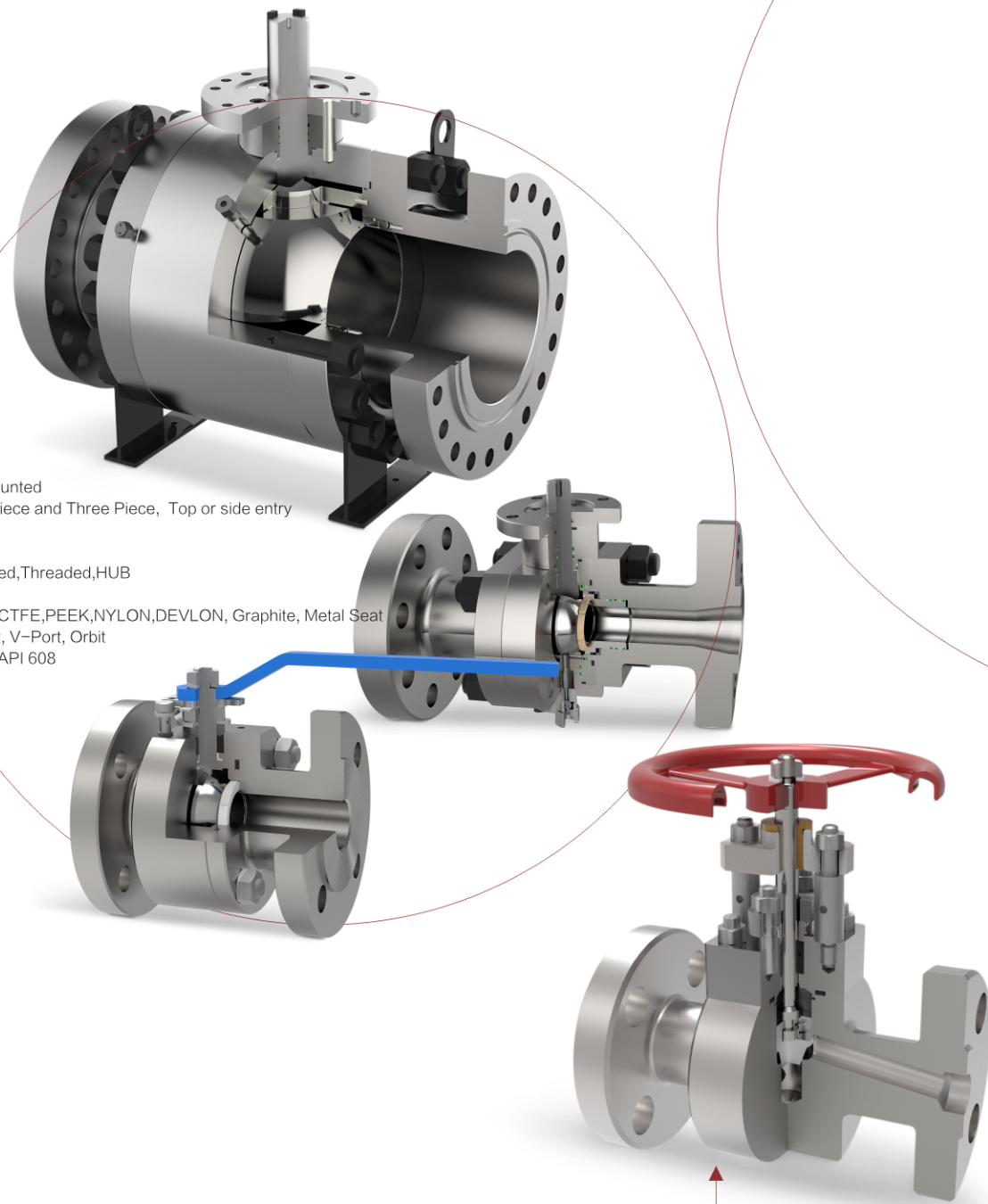
ENERTECH



Material Name	Material Grade	
Titanium Alloy	B381 F2, F3, F5, F7, F12	
Tantalum Alloy	R05200,R05252,R05255,R05240	
Zirconium Alloy	Zirconium 702, 703, 705	
Nickel Alloy	Inconel	Inconel 600, 625,690, 718, X750
	Hastelloy	Hastelloy B, B2, B3, C, C276, G30
	Incoloy	Incoloy800,800H, 800HT, 825
	Monel	Monel 400, K500
	Alloy20	CN7M(N08020)
Nickel	Nickel 200, 201	
Bronze	C95800, C83600, C63200,C61900	
Duplex Stainless Steel	A182 F51, F53, F55, A890(A995) 2A, 3A, 4A, 5A, 6A	
Super Austentic Stainless Steel	N08904(904L),N08926(6MOLY),F44	
Austentic Stainless Steel	CF3,CF8, CF3M,CF8M,CG8M,CF8C, 304L,304,316L,316,316Ti,317L,321(H),347(H)	
Martensitic Stainless Steel	13CR	
Precipitation-Hardening Stainless Steel	17-4PH	
Alloy Steel	WC6, WC9, A217 C5, C12A, F11, F22, F91	
Carbon Steel	WCB,WCC, LCB,LCC, A105N,LF2	

**Ball Valve
Feature**

Design: Floating or Trunnion Mounted
 Construction: One Piece, Two Piece and Three Piece, Top or side entry
 Size: 1/4" ~ 24"
 Pressure: 150LB ~ 2500LB
 End Connection: Flanged, Welded, Threaded, HUB
 Operated: Lever, Gear, Actuator
 Seat Material: PTFE, R-PTFE, PCTFE, PEEK, NYLON, DEVLON, Graphite, Metal Seat
 Options: Extended Stem/Bonnet, V-Port, Orbit
 Design Code: API 6D, BS5351, API 608

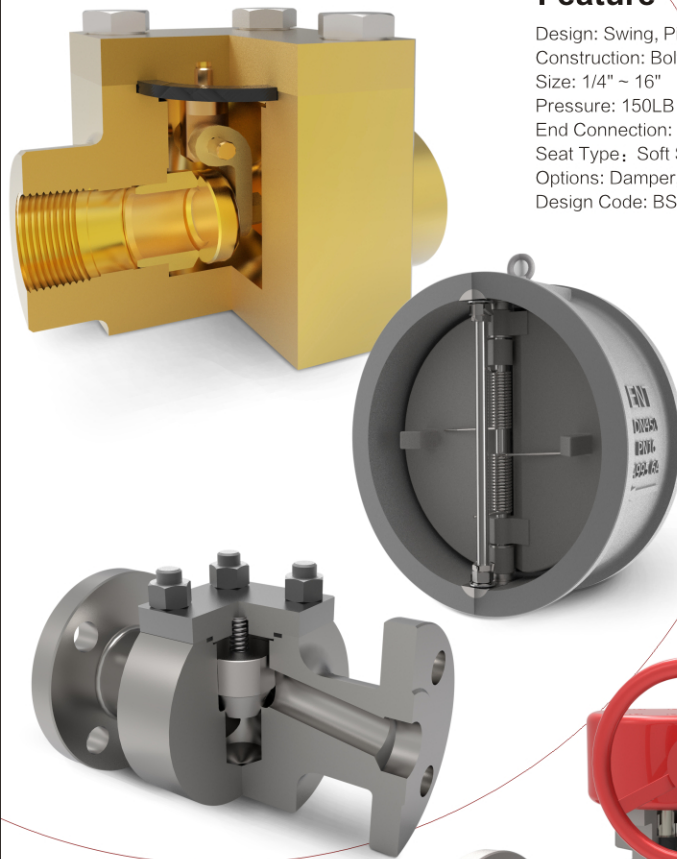


**Globe Valve
Feature**

Pattern: Straight, Angle, Y-type
 Construction: Bolted, Welded, Pressure Seal bonnet
 Size: 1/4" ~ 16"
 Pressure: 150LB ~ 2500LB
 End Connection: Flanged, Welded, Threaded, HUB
 Operated: Handwheel, Gear, Actuator
 Disc Type: Plug, Needle, Swivel, Parabola
 Seat Type: Soft Seat, Metal Seat
 Options: Bellows, Extended Stem/Bonnet
 Design Code: BS1873, API 602

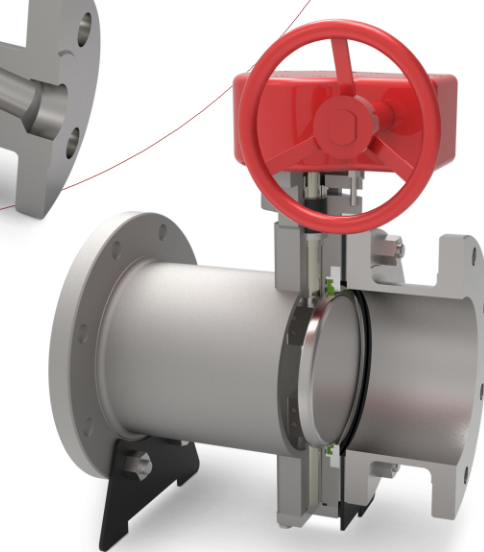
**Check Valve
Feature**

Design: Swing, Piston, Dual Plate, Ball
 Construction: Bolted, Welded, Pressure Seal bonnet
 Size: 1/4" ~ 16"
 Pressure: 150LB ~ 2500LB
 End Connection: Flanged, Welded, Threaded, HUB, Wafer
 Seat Type: Soft Seat, Metal Seat
 Options: Damper, Retainerless
 Design Code: BS1868, API 602, API 594



**Butterfly Valve
Feature**

Design: Rubber Lined Butterfly, High performance Butterfly Valve (Double or Triple Offset)
 Size: 2" ~ 24"
 Pressure: 150LB ~ 600LB
 End Connection: Flanged, Welded, LUG, Wafer
 Operated: Lever, Gear, Actuator
 Seat Material: EPDM, NBR, PTFE, Metal Seat
 Design Code: API 609

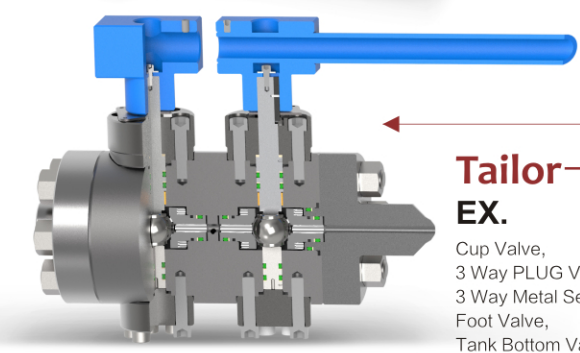


**Gate Valve
Feature**

Design: Rising or Non-Rising Stem
 Construction: Bolted, Welded, Pressure Seal bonnet
 Size: 1/4" ~ 24"
 Pressure: 150LB ~ 2500LB
 End Connection: Flanged, Welded, Threaded, HUB
 Operated: Handwheel, Gear, Actuator
 Gate Type: Solid Gate, Flexible Wedge, Slab Gate, Expanding Gate
 Seat Type: Soft Seat, Metal Seat
 Options: Bellows, Extended Stem/Bonnet
 Design Code: API 6D, API 600, API 602

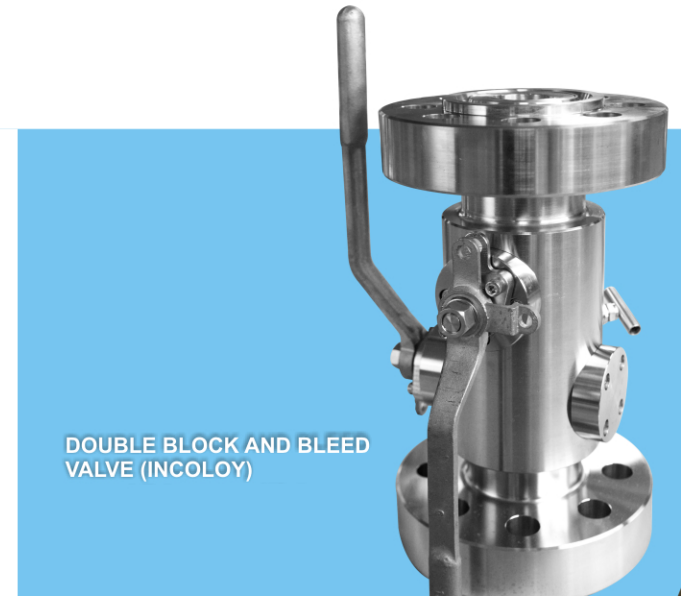
**Tailor-made Valve
EX.**

Cup Valve,
 3 Way PLUG Valve,
 3 Way Metal Seat Ball Valve,
 Foot Valve,
 Tank Bottom Valve,
 Slurry Valve for Autoclave



PRODUCT VIEW

WE ARE GLAD TO
SHOW YOU OUR
PRODUCT



ENERTECH Special Valve
For Severe Service

WE ARE GLAD TO SHOW YOU OUR PRODUCT PRODUCT VIEW

ENERTECH

